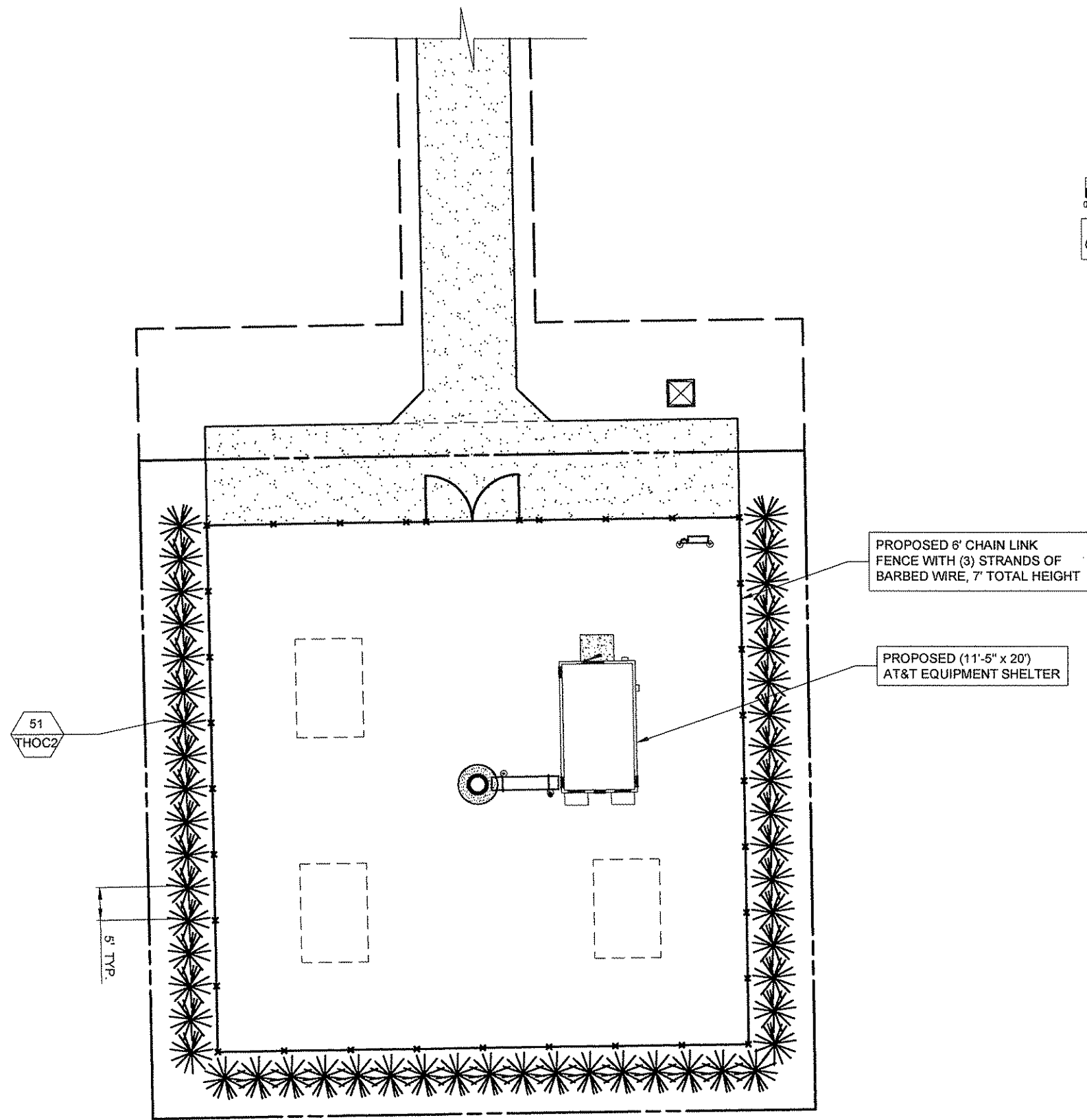
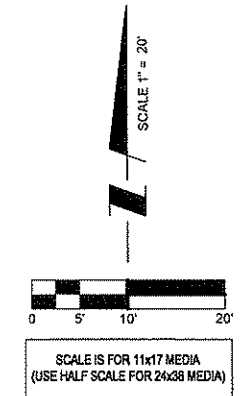


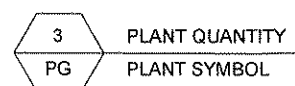
# GENERAL LANDSCAPE NOTES

- PRUNE NEWLY INSTALLED SHRUBS. WORK SHALL BE DONE BY EXPERIENCED PERSONNEL TO THE ACCEPTED HORTICULTURAL AND ARBORICULTURAL STANDARDS. PRUNING SHALL RESULT IN A LOOSE OUTLINE CONFORMING TO THE GENERAL SHAPE OF THE SHRUB TYPE. DO NOT USE HEDGE SHEARS.
- ALL PLANTING STOCK SHALL BE NURSERY-GROWN IN ACCORDANCE WITH GOOD HORTICULTURAL PRACTICE. PLANTS SHALL BE FREE OF DISEASE, INSECTS EGGS, LARVAE AND DEFECTS SUCH AS KNOTS, SUN-SCALD, INJURIES, ABRASIONS OR DISFIGUREMENT. THEY SHALL HAVE SOUND, HEALTHY VIGOROUS AND UNIFORM GROWTH TYPICAL OF THE SPECIES AND VARIETY, WELL-FORMED, FREE FROM IRREGULARITIES, WITH THE MINIMUM QUALITY AND SIZE CONFORMING TO AMERICAN STANDARD FOR NURSERY STOCK.
- GUARANTEE: WARRANT ALL PLANT MATERIAL TO BE TRUE TO BOTANICAL NAME AND SPECIFIED SIZE. AFTER COMPLETION OF PLANTING, ALL PLANT MATERIALS SHALL BE WARRANTED AGAINST DEFECTS, INCLUDING DEATH AND UNSATISFACTORY GROWTH FOR A WARRANTY PERIOD OF ONE YEAR. THE CONTRACTOR WILL NOT BE RESPONSIBLE FOR DEFECTS RESULTING FROM NEGLIGENCE, DAMAGE BY OTHERS, OR UNUSUAL PHENOMENA OR INCIDENTS BEYOND THE CONTRACTORS CONTROL WHICH RESULT FROM NATURAL CAUSES SUCH AS FLOODS, STORMS, FIRES OR VANDALISM.  
REPLACEMENTS: DURING THE WARRANTY PERIOD, REPLACE ONE TIME, AT NO ADDITIONAL COST TO THE OWNER, PLANT MATERIALS THAT ARE DEAD, OR IN THE OPINION OF THE LANDSCAPE ARCHITECT, IN AN UNHEALTHY OR UNSIGHTLY CONDITION. REJECTED PLANT MATERIALS SHALL BE REMOVED FROM THE SITE AT CONTRACTOR'S EXPENSE. REPLACEMENTS ARE TO BE MADE NO LATER THAN THE SUBSEQUENT PLANTING SEASON. RESTORE AREAS DISTURBED BY REPLACEMENT OPERATIONS.
- MULCHING SHALL BE DONE WITHIN 48 HOURS AFTER PLANTING. MULCH SHRUB BEDS TO A UNIFORM DEPTH OF THREE INCHES. MULCH SHALL BE CLEAN COMPOSTED PINE BARK MULCH FREE OF FOREIGN MATERIAL AND LARGE PIECES OVER THREE INCHES LONG. DO NOT MULCH TREE AND SHRUB PLANTING PITS.
- TOPSOIL SHALL CONSIST OF FERTILE FRIABLE NATURAL LOAM, CONTAINING A LIBERAL AMOUNT OF HUMUS AND SHALL BE SUBJECT TO INSPECTION AND APPROVAL. IT SHALL BE FREE OF ADMIXTURES OF SUBSOIL AND FREE OF CRAB GRASS, ROOTS, STICKS AND OTHER EXTRANEIOUS MATTER, AND SHALL NOT BE USED FOR PLANTING OPERATIONS WHILE IN A FROZEN OR MUDDY CONDITIONS.
- REPAIR ALL TURF AREAS BY SEEDING. SEEDING INSTALLATION SHALL BE EXECUTED ONLY AFTER ALL FINISH GRADING HAS BEEN COMPLETED. NO SEEDING WORK SHALL BE DONE PAST SEPTEMBER 15, UNLESS APPROVED BY THE OWNER'S REPRESENTATIVE.  
SEED: SEED MIX SHALL MATCH EXISTING TURF, OR BE A 50/50 MIX OF CERTIFIED IMPROVED BLEND OF BLUEGRASS AND CERTIFIED IMPROVED PERENNIAL RYE. MIX SHALL BE APPROVED BY THE OWNER'S REPRESENTATIVE PRIOR TO PLANTING. SEEDING SHALL BE APPLIED AT A MINIMUM RATE OF 120 POUNDS PER ACRE. FUTERRA BLANKET, OR EQUAL, SHALL BE USED FOR EROSION CONTROL MULCH WHERE NECESSARY IN LIEU OF HYDRO MULCH.



## PLANT LIST

SYMBOL	BOTANICAL NAME	COMMON NAME	QUANTITY	SIZE	COMMENTS
TREES					
THOC2	THUJA OCCIDENTALIS	ARBORVITAE	51	3 TO 3.5 CALIPER INCH	B & B (BALLED & BURLAPPED)



**TERRA CONSULTING GROUP, LTD.**  
 600 Busse Highway  
 Park Ridge, IL 60068  
 Ph: 847/698-6400  
 Fax: 847/698-6401

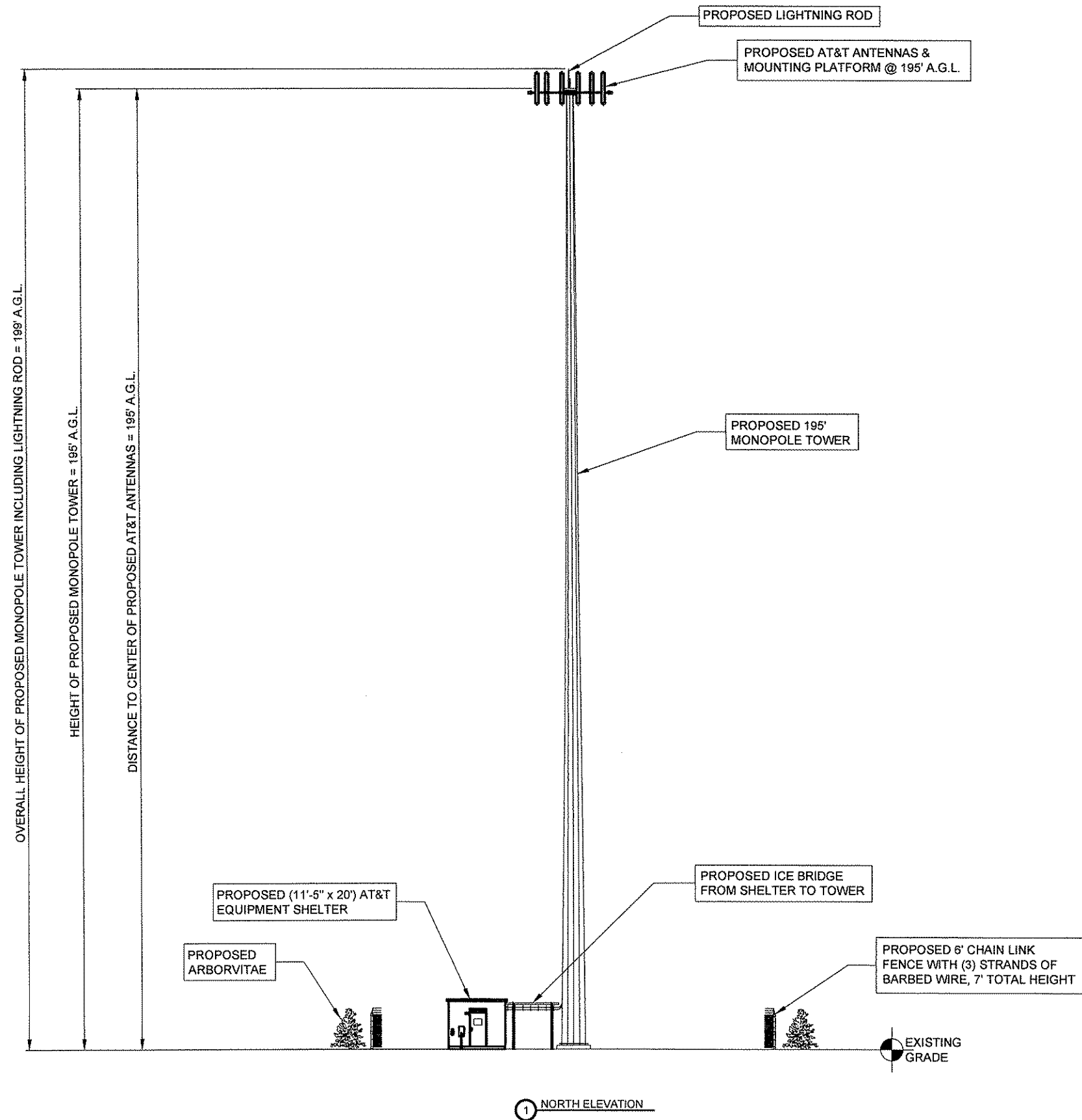
NO.	DESCRIPTION	DATE
1	ISSUED FOR REVIEW	6/7/10
2	REVISED PER CLIENT COMMENTS	6/15/10
3	REVISED PER CLIENT COMMENTS	7/20/10
4	RELOCATED LEASE AREA	8/13/10
5	RELOCATED LEASE AREA	9/23/10

SITE MI2277  
 FA #10146546  
 WILLIS SOUTH  
 11650 BUTLER RD  
 WILLIS, MI

DRAWN BY:	JAY
CHECKED BY:	AJB
DATE:	6/7/10
PROJECT #:	38-199

SHEET TITLE  
**LANDSCAPE PLAN**

SHEET NUMBER  
**L-1**



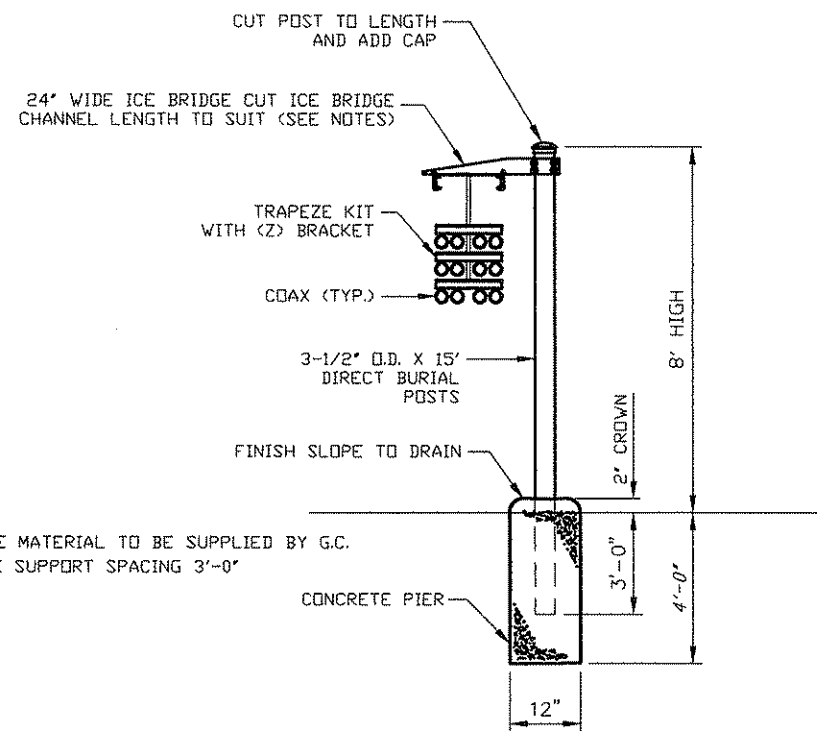
NO.	REVISIONS	DESCRIPTION	DATE
1	ISSUED FOR REVIEW		6/7/10
2	REVISED PER CLIENT COMMENTS		6/15/10
3	REVISED PER CLIENT COMMENTS		7/20/10
4	RELOCATED LEASE AREA		9/13/10
5	RELOCATED LEASE AREA		9/23/10
	ISSUED FOR FINAL		10/18/10

SITE MI2277  
FA #10146546  
WILLIS SOUTH  
11650 BUTLER RD  
WILLIS, MI

DRAWN BY:	JAY
CHECKED BY:	AJB
DATE:	6/7/10
PROJECT #:	38-199

SHEET TITLE  
SITE ELEVATION

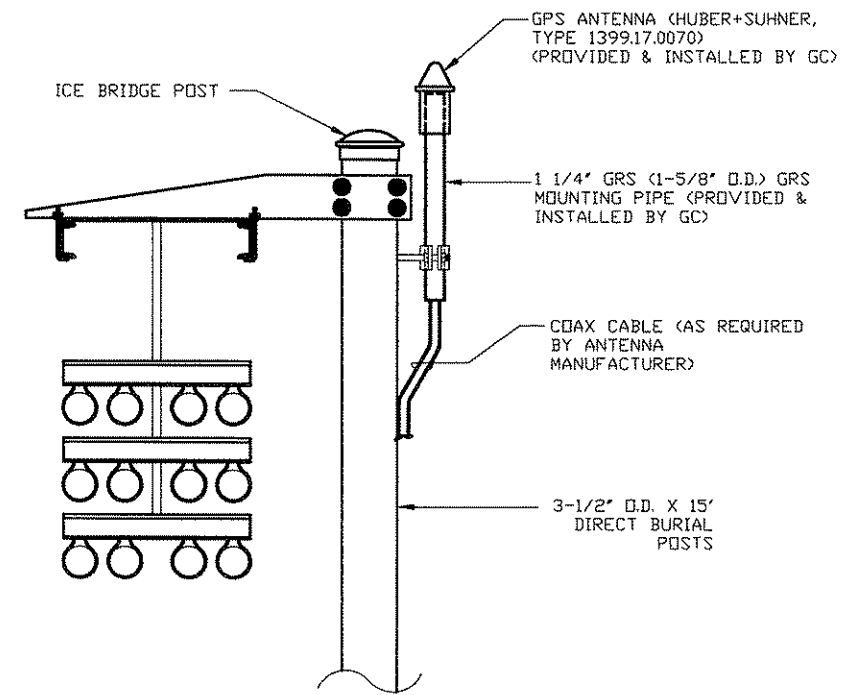
SHEET NUMBER  
**ANT-1**



**NOTES:**

1. ALL ICE BRIDGE MATERIAL TO BE SUPPLIED BY G.C.
2. MAXIMUM CABLE SUPPORT SPACING 3'-0"

**1 ICE BRIDGE SUPPORT POST FOUNDATION**  
SCALE: N.T.S.

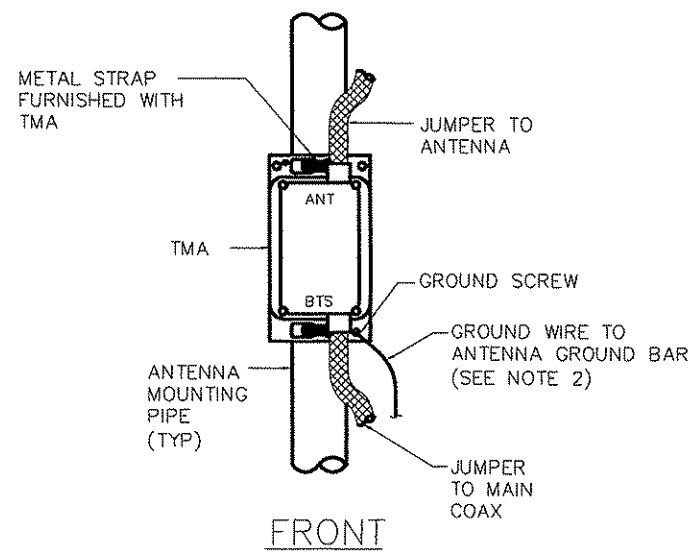


**ELEVATION**

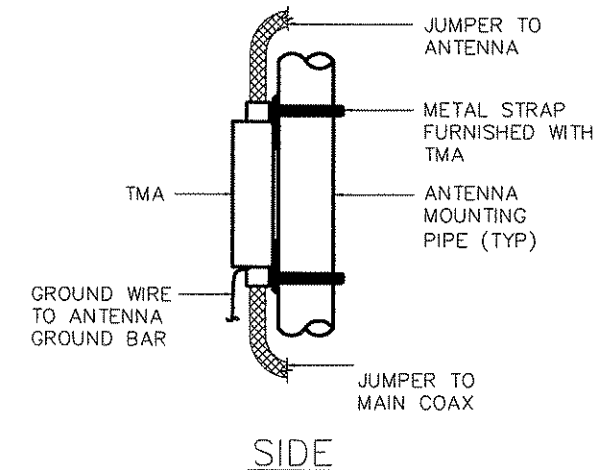
**2 GPS ANTENNA MOUNTING DETAIL**  
SCALE: N.T.S.

**NOTES:**

1. TMA IS A WEATHERPROOFED ENCLOSURE RATED TO IP65.
2. BOND TMA GROUND STUD TO GROUND BAR WITH 6 AWG GROUND WIRE.
3. PROVIDE SUFFICIENT LENGTH OF JUMPER TO ALLOW FOR PROPER APPLICATION OF WEATHER PROOFING AT ANTENNA AND TMA CONNECTIONS.
4. IF POSSIBLE, TMA SHALL BE MOUNTED BEHIND ANTENNA TO MINIMIZE WIND LOADING ON STRUCTURE.



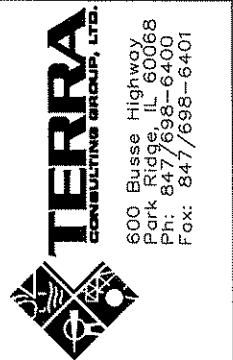
**FRONT**



**SIDE**

**TMA MOUNTING DETAIL**

**3 DETAIL**  
SCALE: N.T.S.



NO.	REVISIONS	DESCRIPTION	DATE
1	ISSUED FOR REVIEW		6/7/10

**SITE MI2277  
FA #10146546**

**WILLIS SOUTH**

11650 BUTLER RD  
WILLIS, MI

DRAWN BY:	JAY
CHECKED BY:	AJB
DATE:	6/7/10
PROJECT #:	38-199

SHEET TITLE  
**SITE DETAILS**

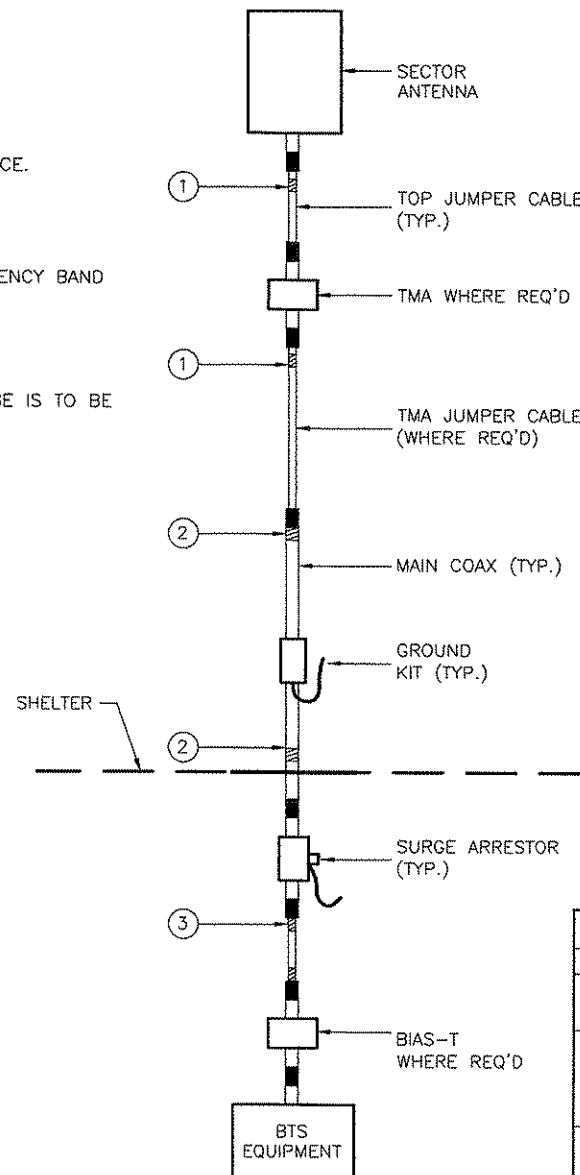
SHEET NUMBER

**ANT-2**

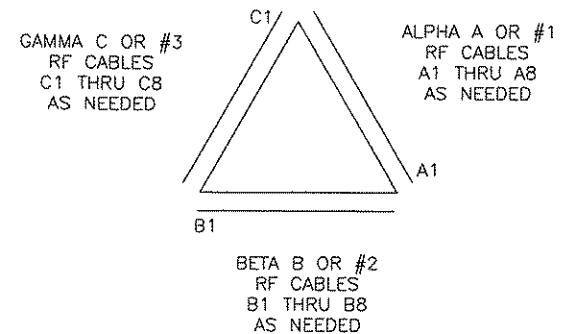


**GENERAL NOTES:**

1. SECTOR ORIENTATION/AZIMUTH WILL VARY FROM REGION TO REGION AND IS SITE SPECIFIC, REFER TO ANTENNA DESIGN SHEET FOR EACH SITE TO DETERMINE THE ANTENNA LOCATION AND FUNCTION OF EACH TOWER SECTOR FACE.
2. THE STANDARD IS BASED ON NINE COLORED TAPES—WHITE, RED, YELLOW, VIOLET, GREEN, BLUE, AND BROWN, ORANGE AND GREY. THESE TAPES SHOULD BE READILY AVAILABLE TO THE ELECTRICIAN OR CONTRACTOR ON SITE.
3. USING COLOR BANDS ON THE CABLES, MARK ALL RF CABLE BY SECTOR#, ANTENNA#, ANTENNA PORT, AND FREQUENCY BAND AS SHOWN ON "CABLE MARKING COLOR CONVENTION TABLE".
4. WHEN AN EXISTING COAXIAL LINE THAT IS INTENDED TO BE A SHARED LINE BETWEEN GSM/3G AND IS 136/TDMA IS ENCOUNTERED, THE CONTRACTOR IS TO REMOVE THE EXISTING COLOR CODING SCHEME AND REPLACE IT WITH THE COLOR CODING AND TAGGING STANDARD THAT IS OUTLINED IN THIS GUIDELINE. IN THE ABSENCE OF AN OF AN EXISTING COLOR CODING AND TAGGING SCHEME, OR WHEN INSTALLING NEW COAXIAL CABLES, THIS GUIDELINE IS TO BE IMPLEMENTED AT THAT SITE REGARDLESS OF TECHNOLOGY.
5. ALL COLOR CODE TAPE SHALL BE 3M-35 AND SHALL BE INSTALLED USING A MINIMUM OF (3) WRAPS OF TAPE AND SHALL BE NEATLY TRIMMED AND SMOOTHED SO AS TO AVOID UNRAVELING.
6. ALL COLOR BANDS INSTALLED ON THE TOWER TOP SHALL BE A MINIMUM OF 3" WIDE AND SHALL HAVE A MINIMUM 3/4" OF SPACE BETWEEN EACH COLOR.
7. ALL COLOR BANDS SHALL BE INSTALLED AT OR NEAR THE GROUND AND SHALL BE A MINIMUM OF 3/4" WIDE.
8. ALL COLOR CODES SHALL BE INSTALLED SO AS TO ALIGN NEATLY WITH ONE ANOTHER FROM SIDE TO SIDE.



SECTORIZED EXAMPLE:



**TOWER PLAN VIEW**

NOTE: IF EXISTING CABLES AT THE SITE ALREADY HAVE A COLOR CODING SCHEME AND THEY ARE NOT INTENDED TO BE REUSED OR SHARED WITH THE GSM TECHNOLOGY, THEN THE EXISTING COLOR CODING SCHEME MAY REMAIN UNTOUCHED.

ALL RF CABLE SHALL BE MARKED AS PER CABLE MARKING LOCATIONS TABLE BELOW:

CABLE MARKING LOCATIONS TABLE			
NO.	TAPE	TAG	LOCATIONS
1.	X		EACH TOP JUMPER WILL BE COLOR CODED WITH ONE SET OF (3") WIDE BANDS.
2.	X		EACH MAIN COAX SHALL BE COLOR CODED WITH (1) SET OF 3" WIDE BANGS NEAR THE TOP JUMPER CONNECTION WITH (1) SET OF 3/4" WIDE COLOR BANDS JUST PRIOR TO ENTERING THE BTS OR TRANSMITTER BUILDING.
3.	X		ALL BOTTOM JUMPERS SHALL BE COLOR CODED WITH (1) SET OF 3/4" WIDE BANDS ON EACH END OF BOTTOM JUMPER. (REFER TO SHEETS "SECTORS A & B", "SECTOR C AND PLAN VIEW" FOR ACTUAL NUMBER OF BOTTOM JUMPERS)

1  
—  
DETAIL  
SCALE: N.T.S.

CABLE MARKING LOCATIONS DIAGRAM & COAX COLOR CODE IDENTIFICATION DETAIL

NO.	DESCRIPTION ISSUED FOR REVIEW	DATE
		9/7/10

SITE MI2277  
FA #10146546  
WILLIS SOUTH  
11650 BUTLER RD  
WILLIS, MI

DRAWN BY:	JAY
CHECKED BY:	AJB
DATE:	6/7/10
PROJECT #	38-199

SHEET TITLE  
COAX LABELING

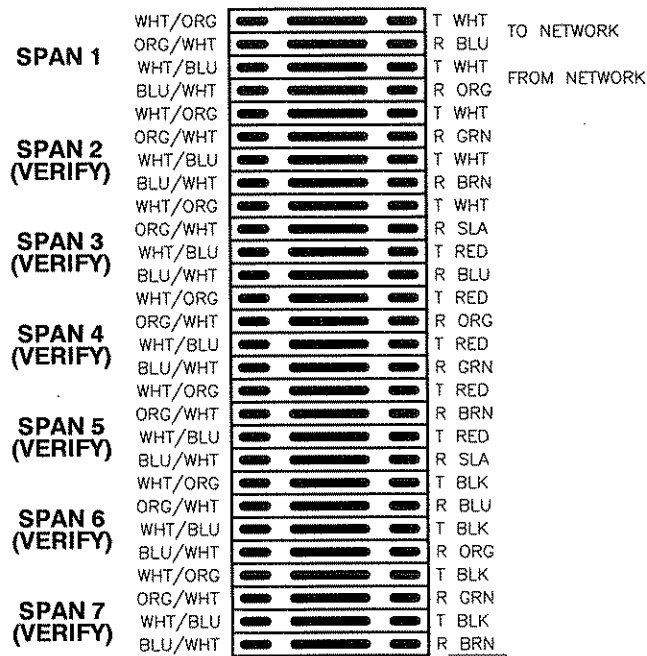
SHEET NUMBER  
**ANT-3**





TO DSX/BTS  
(AT&T)

IN FRM H-FRAME  
(CONTRACTOR)



66 BLOCK ON STAND-OFF FRAME MOUNTED TO WALL ABOVE TELCO ENTRY (MIN. 4'-0" HIGH)  
(CONTRACTOR)  
(SEE NOTE #4)

FUTURE EXPANSION SPARE WIRES TO BE WRAPPED AROUND CABLES BEHIND 66 BLOCK

NOTE: DO NOT GROUND CABLE SHIELD AT THIS END

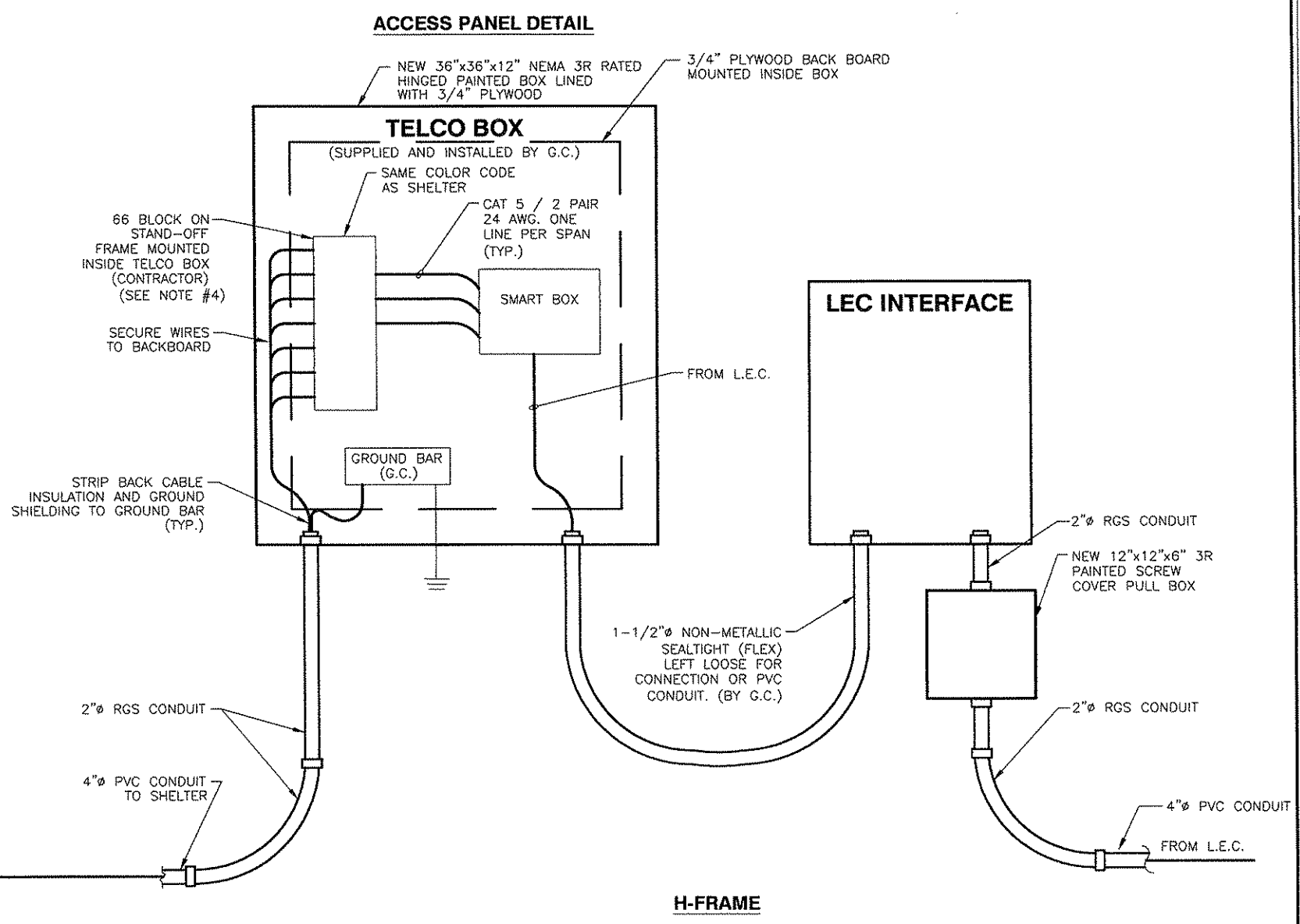
(1) 25 PR GEL FILLED CABLE RUN IN ONE 4" PVC SCHEDULE 40 CONDUIT TO H-FRAME.  
(SEE NOTE 4)

SHELTER

(CONTRACTOR)

H-FRAME

- NOTE:**
1. CONNECTIONS TO SMART JACKS SHALL BE HARD WIRED. NO RJ45 OR RJ48 CONNECTORS TO BE USED.
  2. LOCATIONS OF SMART JACKS TO BE DETERMINED BY L.E.C. SMART JACKS BE LOCATED IN TELCO BOX IF AGREED WITH L.E.C.
  3. SMART JACKS TO BE LOCATED IN TELCO BOX IF AGREED WITH L.E.C.
  4. G.C. TO PUNCH DOWN CABLE IN TELCO BOX AND IN SHELTER ON 66 BLOCK.
  5. G.C. TO VERIFY THE NUMBER OF T1's THAT ARE BEING INSTALLED AT SITE WITH AT&T PM.



**ACCESS PANEL DETAIL**

NEW 36"x36"x12" NEMA 3R RATED HINGED PAINTED BOX LINED WITH 3/4" PLYWOOD  
3/4" PLYWOOD BACK BOARD MOUNTED INSIDE BOX

**TELCO BOX**  
(SUPPLIED AND INSTALLED BY G.C.)  
SAME COLOR CODE AS SHELTER

CAT 5 / 2 PAIR 24 AWG. ONE LINE PER SPAN (TYP.)

GROUND BAR (G.C.)

**LEC INTERFACE**

1 TELCO INTERFACE  
SCALE: N.T.S.



**TERRA CONSULTING GROUP, LTD.**  
600 Busse Highway  
Park Ridge, IL 60068  
Ph: 847/698-6400  
Fax: 847/698-6401

NO.	DATE	DESCRIPTION
	07/10	ISSUED FOR REVIEW

SITE MI2277  
FA #10146546  
WILLIS SOUTH  
11650 BUTLER RD  
WILLIS, MI

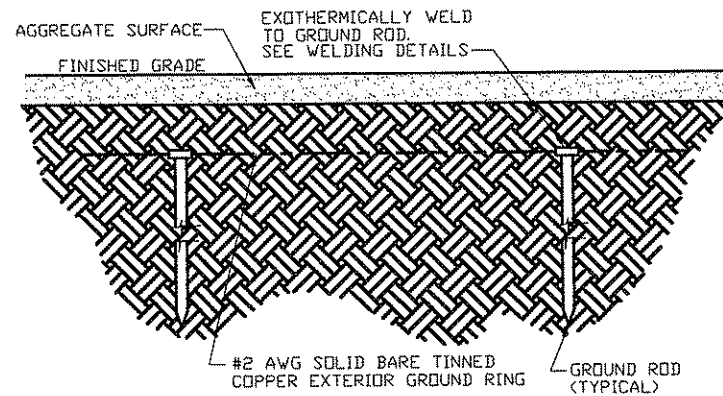
DRAWN BY:	JAY
CHECKED BY:	AJB
DATE:	6/7/10
PROJECT #:	38-199

SHEET TITLE  
TELCO INTERFACE

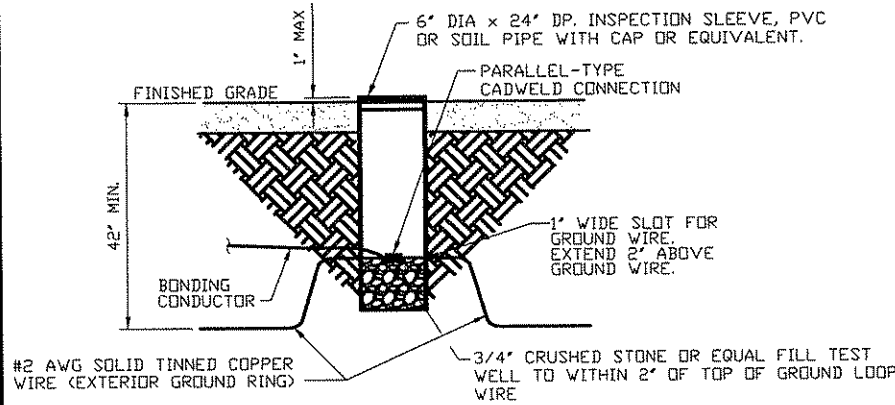
SHEET NUMBER  
**E-3**

**GENERAL NOTES:**

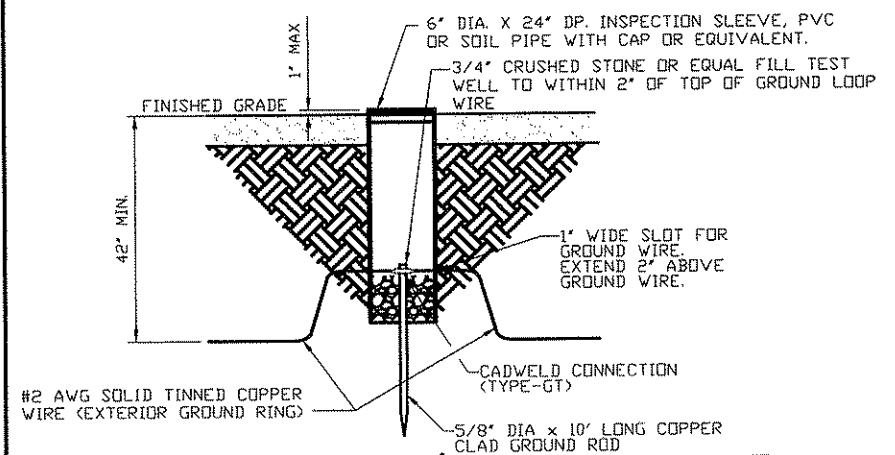
1. ALL DETAILS ARE SHOWN IN GENERAL TERMS. ACTUAL GROUNDING INSTALLATION AND CONSTRUCTION MAY VARY DUE TO SPECIFIC SITE CONDITIONS.
2. ALL EXTERIOR GROUNDING CABLE AND TOP OF GROUNDING RODS SHALL BE BURIED A MINIMUM DEPTH OF 42" BELOW FINISHED GRADE.
3. ALL GROUNDING CONDUCTORS SHALL BE #2 SOLID TINNED COPPER CABLE.
4. GROUND SYSTEM SHALL BE TESTED PER SPECIFICATIONS AND SHALL HAVE A RESISTANCE OF 5 OHMS OR LESS.
5. NOTIFY ENGINEER IF THERE ARE ANY DIFFICULTIES INSTALLING GROUNDING SYSTEM DUE TO SITE SOIL CONDITIONS.



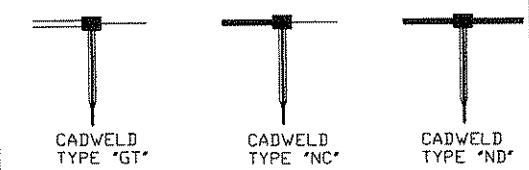
**2 GROUND RING DETAIL**  
SCALE: N.T.S.



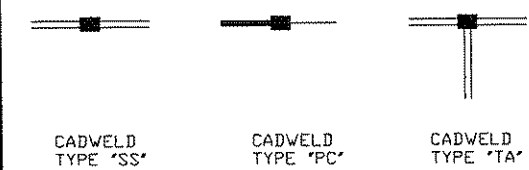
**3 EXOTHERMIC WELD W/ INSPECTION SLEEVE**  
SCALE: N.T.S.



**4 GROUND ROD W/ INSPECTION SLEEVE**  
SCALE: N.T.S.



CABLE TO GROUND ROD COMBINATIONS



CABLE TO CABLE COMBINATIONS

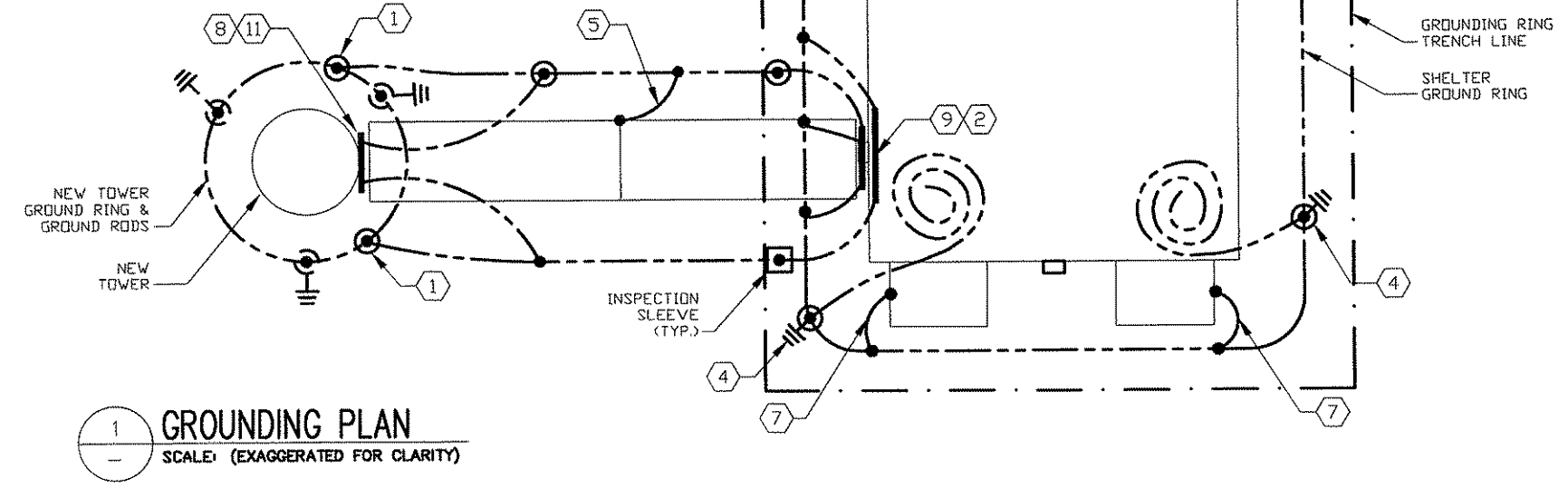
**5 EXOTHERMIC WELDING DETAILS**  
SCALE: N.T.S.

**KEYED NOTES:**

1. **TOWER GROUNDING:** EXTEND #2 TINNED CU WIRE FROM BURIED GROUND RING TO EXISTING TOWER AND MAKE EXOTHERMIC CONNECTION.
2. **HATCHPLATE GROUND BAR:** EXTEND #2 TINNED CU WIRE FROM BURIED GROUND RING UP TO THE HATCHPLATE GROUND BAR AND MAKE AN EXOTHERMIC WELD.
3. **GROUNDING OF INTERNAL GROUND RING:** EXTEND #2 TINNED CU WIRE FROM BURIED GROUND RING THROUGH 1/2" DIA. PVC SLEEVE INTO EQUIPMENT SHELTER FOR CONNECTION TO INTERIOR HALD GROUND RING. TYPICAL AT 4 BUILDING CORNERS.
4. **GROUND ROD:** COPPERCLAD STEEL, 5/8" DIA. TEN (10) FEET LONG.
5. **ICE BRIDGE SUPPORT POST GROUNDING:** EXTEND #2 TINNED CU WIRE FROM BURIED GROUND RING TO ALL ICE BRIDGE SUPPORT POSTS AND EXOTHERMICALLY WELD.
6. **FENCE GROUNDING:** IF FENCE IS WITHIN 6' OF GROUND RING, EXTEND #2 TINNED CU WIRE FROM BURIED GROUND RING TO FENCE CORNER POSTS AND EXOTHERMICALLY WELD. BOND INTERMEDIATE POST IF REQUIRED TO MAINTAIN 25' MAX SPACING.
7. **HVAC GROUNDING:** EXTEND #2 TINNED CU WIRE FROM BURIED GROUND RING TO THE HVAC UNIT AND MAKE A MECHANICAL CONNECTION.
8. **TOWER GROUND BAR:** EXTEND #2 TINNED CU WIRE FROM BURIED GROUND RING UP TO THE TOWER GROUND BAR AND MAKE AN EXOTHERMIC WELD. SECURE GROUND BAR DIRECTLY TO TOWER WITH STAINLESS STEEL MOUNTING MATERIAL.
9. **CELL REFERENCE GROUND BAR:** EXTEND #2 TINNED CU WIRE FROM BURIED GROUND RING UP TO THE CELL REFERENCE GROUND BAR (INSIDE SHELTER) AND MAKE A MECHANICAL CONNECTION.
10. **TELCO GROUND BAR:** EXTEND #2 TINNED CU WIRE FROM BURIED GROUND RING UP TO TELCO GROUND BAR (INSIDE SHELTER) AND MAKE A MECHANICAL CONNECTION.
11. **ANTENNA GROUND BAR:** MOUNT GROUND BAR DIRECTLY TO TOWER AT TOP OF CDAX RUNS. SECURE TO TOWER WITH STAINLESS STEEL MOUNT.
12. **GATE GROUNDING:** EXTEND #2 TINNED CU WIRE FROM BURIED GROUND RING TO GATE POSTS AND EXOTHERMICALLY WELD.

NOTE:  
CONTRACTOR TO INSTALL NON-METALLIC SEAL TITE OR FLEXIBLE PVC ON THE GROUND LEADS ENTERING THE SHELTER. OPENINGS TO BE SILICONED.

- LEGEND:**
- EXOTHERMIC WELD (CADWELD) (UNLESS OTHERWISE NOTED)
  - ⊓ 5/8" x 10' COPPER CLAD STEEL GROUND
  - ⊓ 5/8" x 10' COPPER CLAD STEEL GROUND ROD WITH INSPECTION SLEEVE
  - EXOTHERMIC WELD (CADWELD) WITH INSPECTION SLEEVE
  - GROUNDING WIRE



**1 GROUNDING PLAN**  
SCALE: (EXAGGERATED FOR CLARITY)



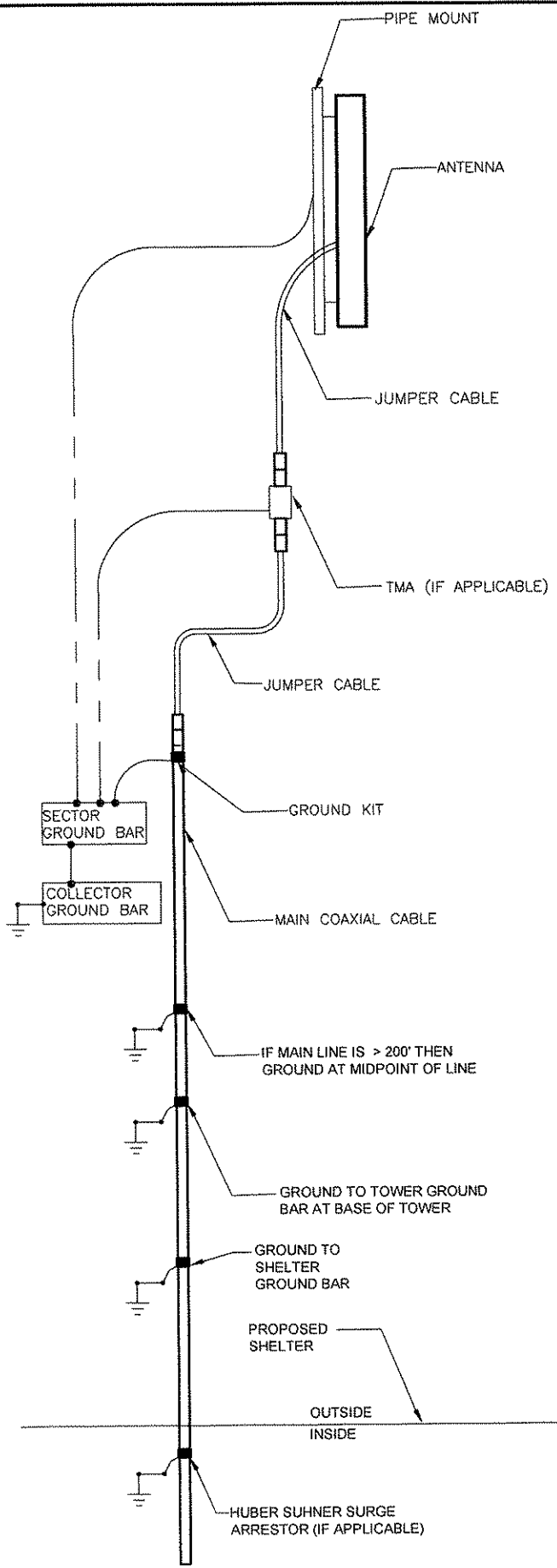
NO.	REVISIONS	DESCRIPTION	DATE
1	ISSUED FOR REVIEW	6/7/10	
2	REVISED PER CLIENT COMMENTS	6/15/10	
3	REVISED PER CLIENT COMMENTS	7/20/10	
4	RELOCATED LEASE AREA	8/13/10	
	RELOCATED LEASE AREA	9/23/10	

**SITE MI2277**  
**FA #10146546**  
**WILLIS SOUTH**  
11650 BUTLER RD  
WILLIS, MI

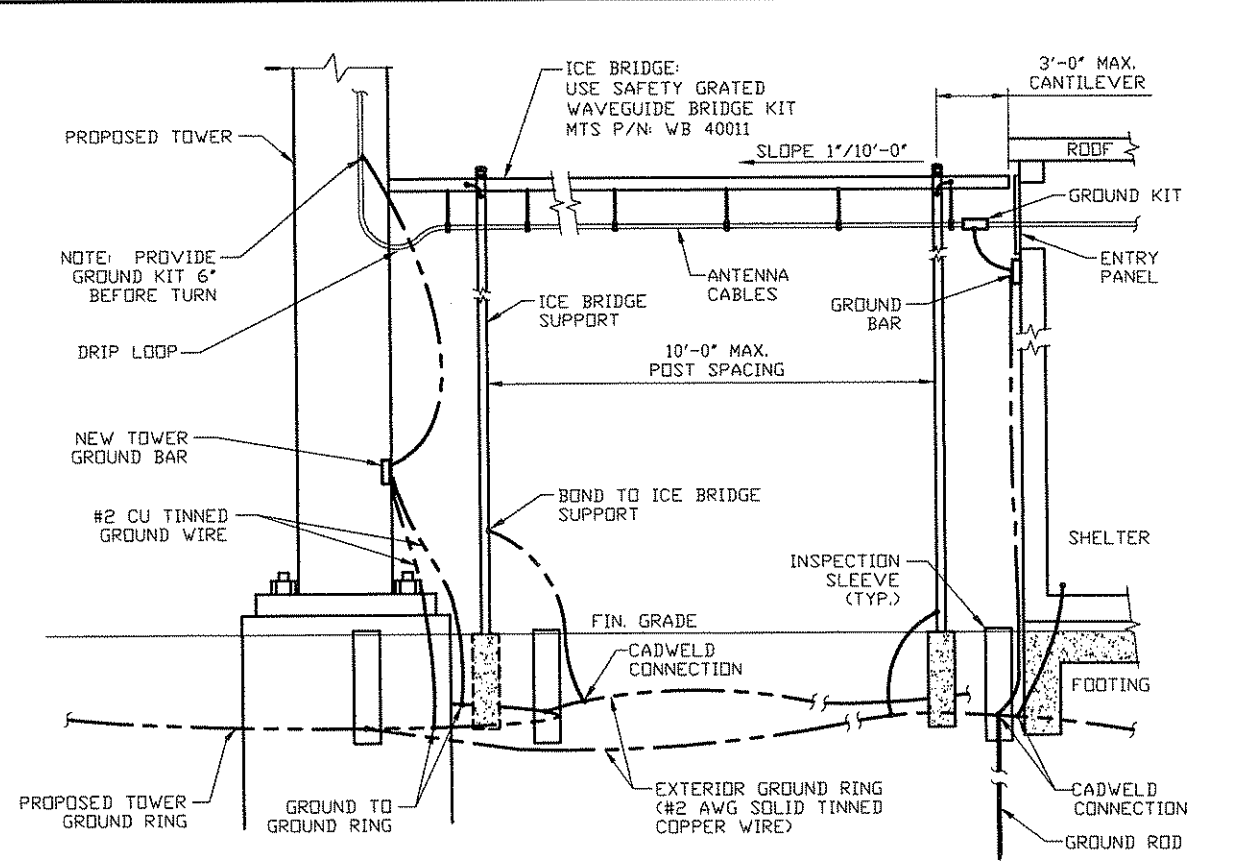
DRAWN BY	JAY
CHECKED BY	AJB
DATE	6/7/10
PROJECT #	38-199

SHEET TITLE  
**GROUNDING DETAILS**

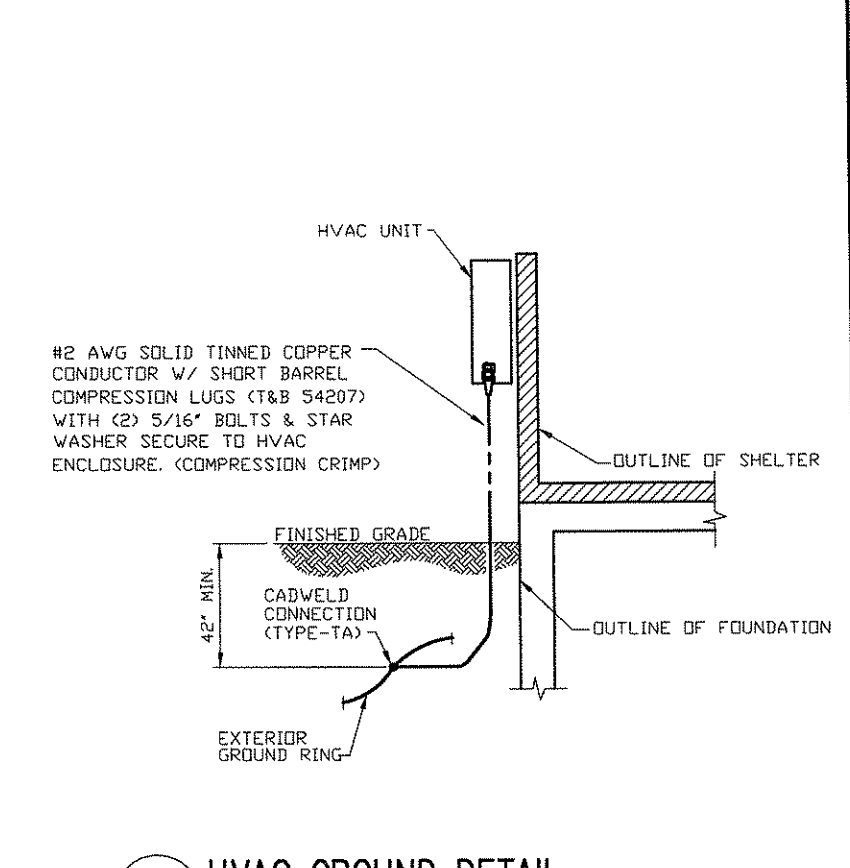
SHEET NUMBER  
**G-1**



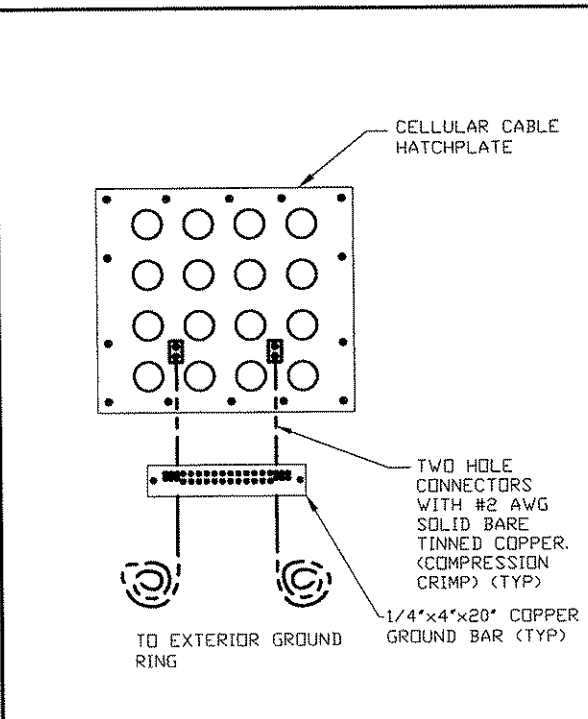
1 ANTENNA GROUNDING DETAIL  
SCALE: N.T.S.



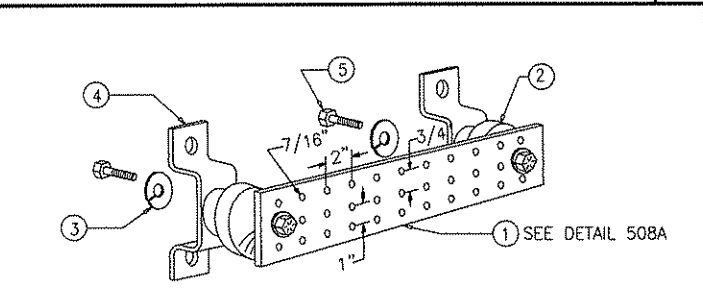
2 ICE BRIDGE AND ANTENNA CABLE DETAIL  
SCALE: N.T.S.



3 HVAC GROUND DETAIL  
SCALE: N.T.S.

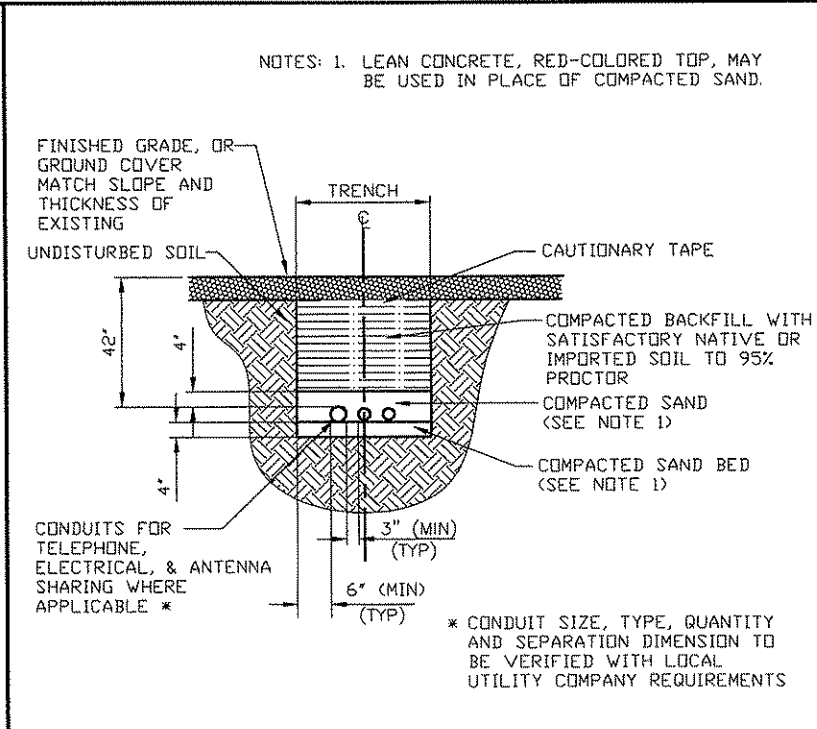


4 EXTERIOR HATCH PLATE GROUNDING AT BUILDING  
SCALE: N.T.S.



- LEGEND
- 1- COPPER GROUND BAR, "x 4"x 20", NEWTON INSTRUMENT CO. CAT. NO. B-6142 OR EQUAL. HOLE CENTERS TO MATCH NEMA DOUBLE LUG CONFIGURATION. (ACTUAL GROUND BAR SIZE WILL VARY BASED ON NUMBER OF GROUND CONNECTIONS)
  - 2- INSULATORS, NEWTON INSTRUMENT CAT. NO. 3061-4 OR EQUAL
  - 3- 5/8" LOCK WASHERS, NEWTON INSTRUMENT CO. CAT. NO. 3015-8 OR EQUAL
  - 4- WALL MOUNTING BRACKET, NEWTON INSTRUMENT CO. CAT. NO. A-6056 OR EQUAL
  - 5- 5/8-11 X 1" HHCS BOLTS, NEWTON INSTRUMENT CO. CAT. NO. 3012-1 OR EQUAL
  - 6- INSULATORS SHALL BE ELIMINATED WHEN BONDING DIRECTLY TO TOWER/MONOPOLE STRUCTURE. CONNECTION TO TOWER/MONOPOLE STRUCTURE SHALL BE PER MANUFACTURERS RECOMMENDATIONS.

GROUND BAR DETAIL  
DETAIL NTS 509



DIRECT BURIED CONDUIT  
5 DETAIL SCALE: N.T.S.



**TERRA CONSULTING GROUP, LTD.**  
600 Busse Highway  
Park Ridge, IL 60068  
Ph: 847/698-6400  
Fax: 847/698-6401

NO.	DATE	DESCRIPTION
1	6/7/10	ISSUED FOR REVIEW
2	6/15/10	REVISED PER CLIENT COMMENTS
3	7/20/10	REVISED PER CLIENT COMMENTS
4	8/13/10	RELOCATED LEASE AREA
5	9/23/10	RELOCATED LEASE AREA

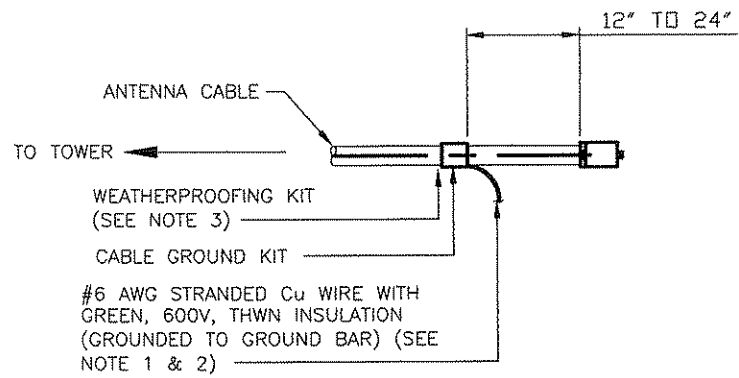
SITE MI2277  
FA #10146546  
WILLIS SOUTH

11650 BUTLER RD  
WILLIS, MI

DRAWN BY:	JAY
CHECKED BY:	AJB
DATE:	6/7/10
PROJECT #:	38-199

SHEET TITLE  
GROUNDING DETAILS

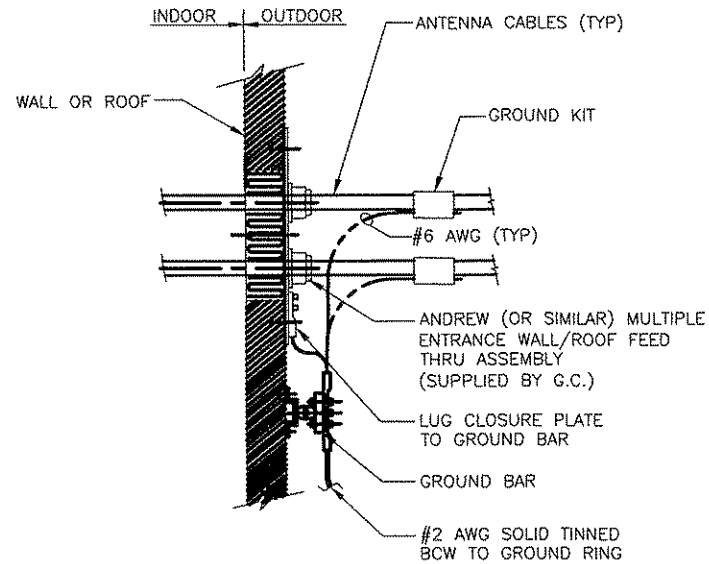
SHEET NUMBER  
**G-2**



CONNECTION OF CABLE GROUND KIT TO ANTENNA CABLE

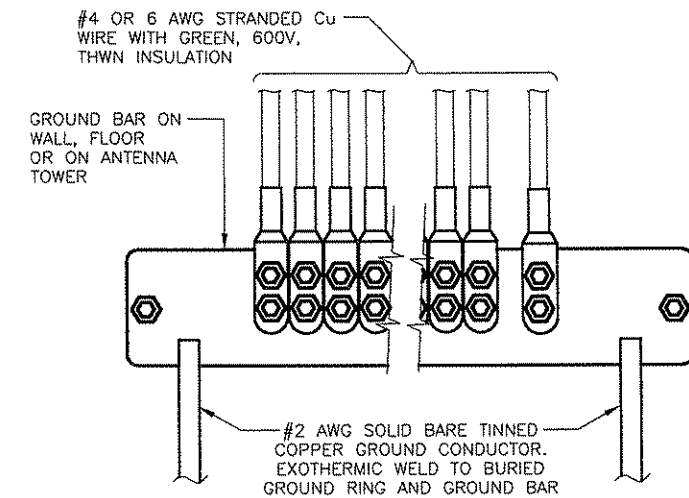
- NOTES:
- DO NOT INSTALL CABLE GROUND KIT AT A BEND AND ALWAYS DIRECT GROUND WIRE DOWN TO GROUND BAR.
  - GROUNDING KIT SHALL BE TYPE AND PART NUMBER AS SUPPLIED OR RECOMMENDED BY CABLE MANUFACTURER.
  - WEATHER PROOFING SHALL BE (TYPE AND PART NUMBER AS SUPPLIED OR RECOMMENDED BY CABLE MANUFACTURER.)

1  
—  
DETAIL  
SCALE: N.T.S.



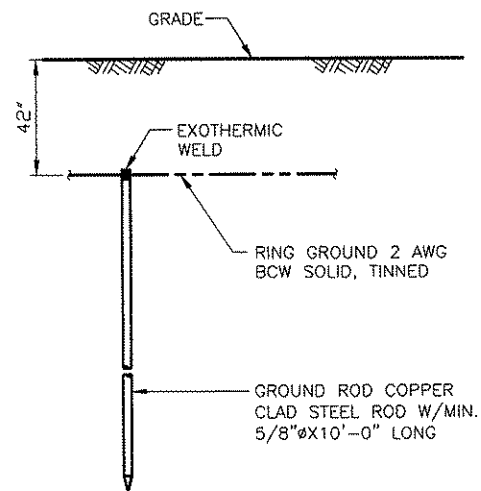
INSTALLATION OF CABLE GROUNDING KIT

2  
—  
DETAIL  
SCALE: N.T.S.



INSTALLATION OF GROUND WIRE TO GROUND BAR

3  
—  
DETAIL  
SCALE: N.T.S.



NOTE:  
GROUND ROD SHALL BE DRIVEN VERTICALLY, NOT TO EXCEED 45 DEGREES FROM THE VERTICAL.

GROUND ROD

4  
—  
DETAIL  
SCALE: N.T.S.



**TERRA**  
CONSULTING GROUP, LTD.  
600 Busse Highway  
Park Ridge, IL 60068  
Ph: 847/698-6400  
Fax: 847/698-6401

NO.	REVISIONS	DESCRIPTION	DATE
1	ISSUED FOR REVIEW		6/7/10

SITE MI2277  
FA #10146546

WILLIS SOUTH

11650 BUTLER RD  
WILLIS, MI

DRAWN BY:	JAY
CHECKED BY:	AJB
DATE:	6/7/10
PROJECT #:	38-199

SHEET TITLE  
GROUNDING  
DETAILS

SHEET NUMBER  
**G-3**